

TYPE	BEGIN STATION	END STATION	LF	END TREATMENT
Steel W-Beam S-Face	50+00	58+81.97	787.5	2 - END TREATMENT TV 1
	58+81.97	787.5		

TYPE	BEGIN STATION	END STATION	TAPER LENGTH
LT & RT EOP	50+00	50+50	50'
LT & RT EOP	58+32	58+81.97	50'

GUARDRAIL NOTES

TYPE	BEGIN STATION	END STATION	LF	END TREATMENT
THREE BEAM BRIDGE CONNECTOR EACH	50+00	58+81.97	787.5	2 - END TREATMENT TV 1

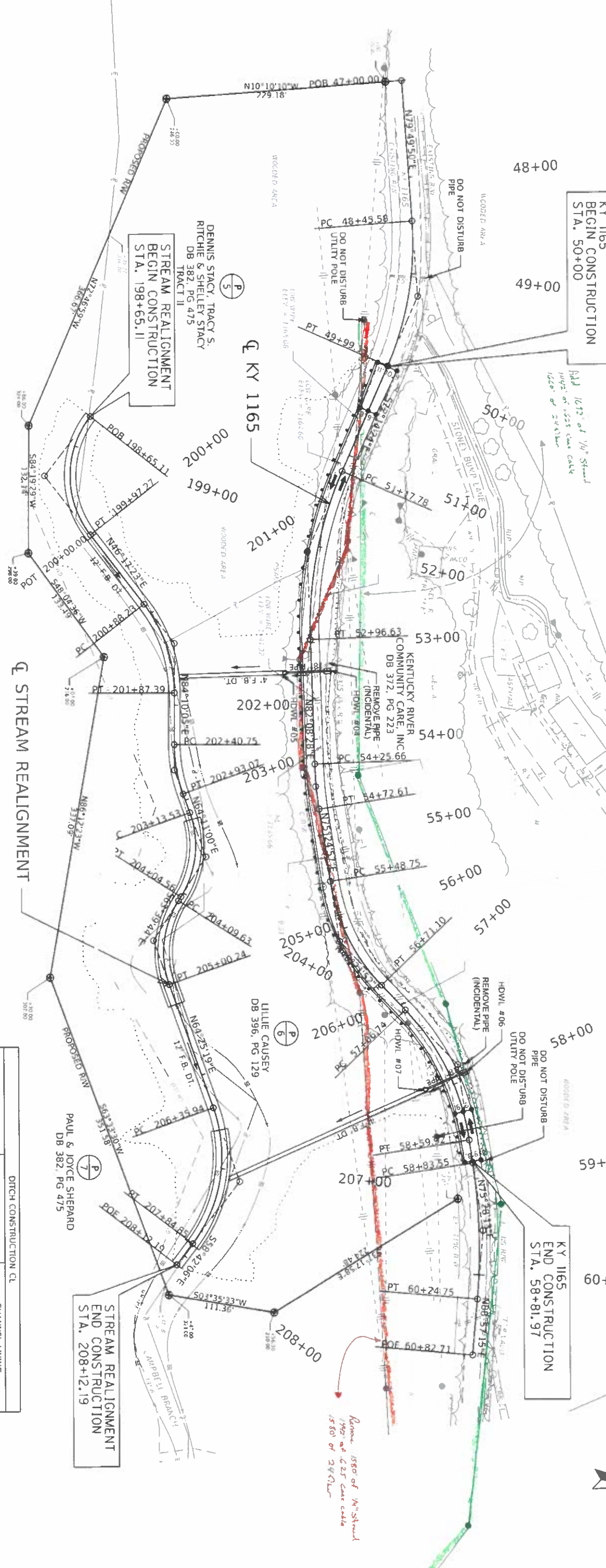
NOTES - INCLUDES THE RADIUS RAIL FACTOR --7TT GUARDRAIL POSTS

EDGE KEY

STA 50+00 - CONSTRUCT 22 L.F.
STA 58+81.97 - CONSTRUCT 17 L.F.

TYPE	BEGIN STATION	END STATION	TAPER LENGTH
LT & RT EOP	50+00	50+50	50'
LT & RT EOP	58+32	58+81.97	50'

REFERENCE ONLY



STREAM REALIGNMENT	STREAM REALIGNMENT	STREAM REALIGNMENT	STREAM REALIGNMENT	STREAM REALIGNMENT	STREAM REALIGNMENT
PI STA 199+42.85 A = 75'43.12" LT T = 77.74' L = 132.16' R = 100.00' E = 26.66'	PI STA 201+39.70 A = 37'52.41" RT T = 51.47' L = 99.16' R = 150.00' E = 8.59'	PI STA 202+67.18 A = 19'59.05" LT T = 26.43' L = 32.32' R = 100.00' E = 11.33'	PI STA 203+62.47 A = 52'09.16" RT T = 48.94' L = 91.03' R = 100.00' E = 11.33'	PI STA 204+58.31 A = 51'54.57" LT T = 48.68' L = 90.61' R = 100.00' E = 11.22'	PI STA 207+17.18 A = 56'52.35" RT T = 81.23' L = 148.90' R = 150.00' E = 20.58'

STA. TO STA.	DITCH CONSTRUCTION CL		CHANNEL LINING	
	TYPE	D	T	QTY
198+65.11 - 207+93	CL V	5.0'	2.0	1014 CY
202+93 - 204+99	GAB*	5.0'	2.0	680 CY*
204+99 - 206+33	CL V	1.5'	2.0	318 CY
206-33 - 207+86	GAB*	1.5'	2.0	544 CY*
207+86 - 208+12.19	CL IV	1.5'	2.0	62 CY

*GABION STEP DITCH, QTY, CU YD GABION